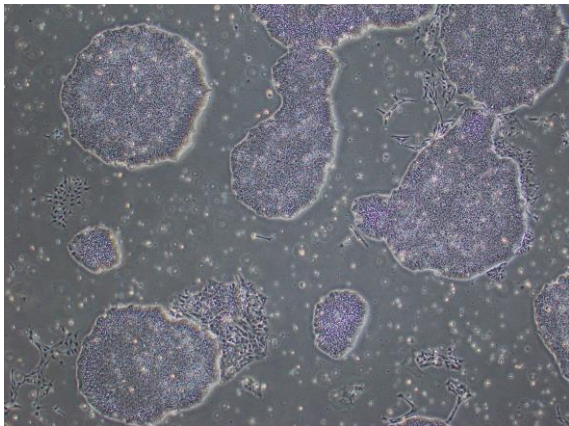
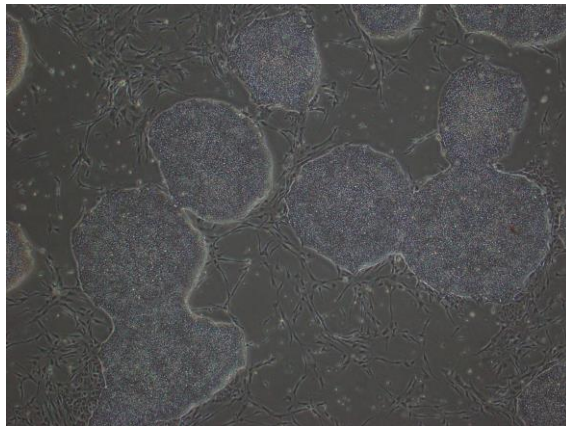


【 CiRA-j-1536 】 Morphology of iPSC colonies

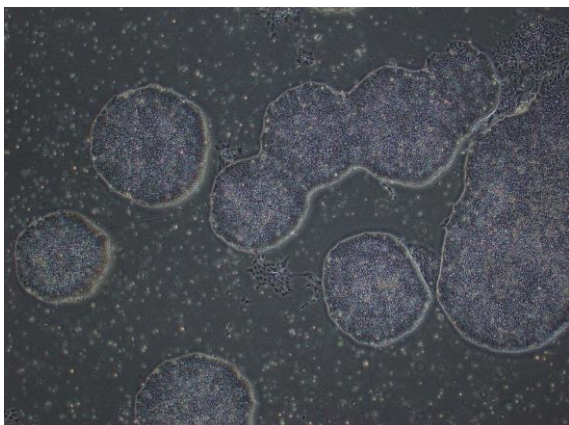
CiRA-j-1536-A: passage-4



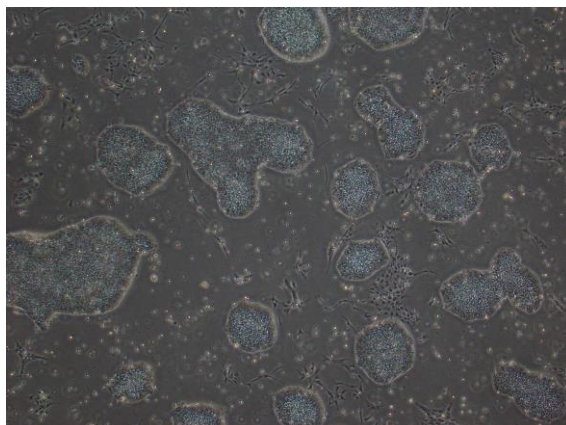
CiRA-j-1536-B: passage-3



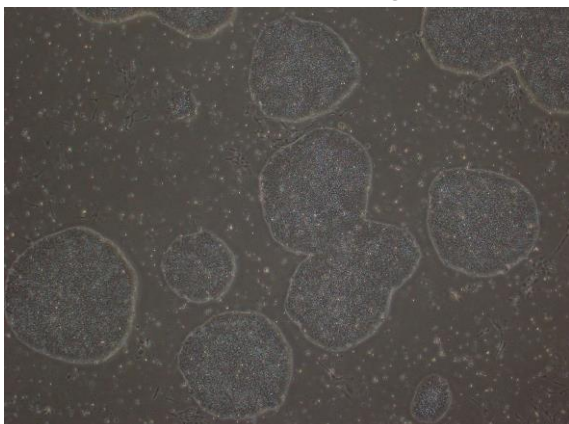
CiRA-j-1536-C: passage-3



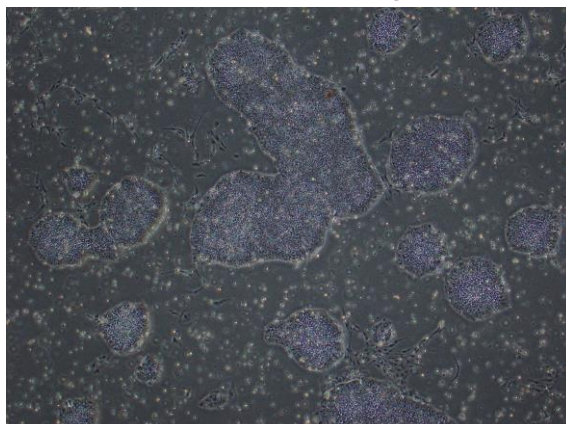
CiRA-j-1536-D: passage-3



CiRA-j-1536-E: passage-3



CiRA-j-1536-F: passage-3



(All images were captured at 4x magnification)